

WOMEN'S RUGBY IN 2014



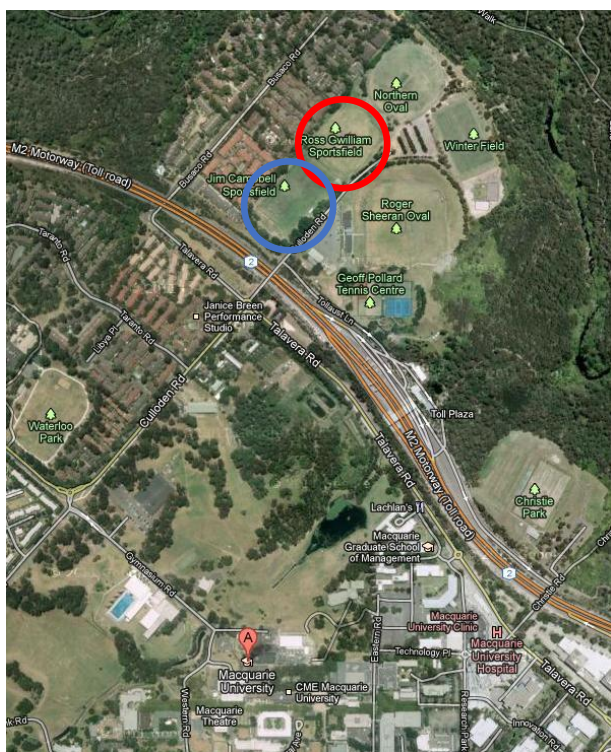
WANNA KEEP FIT AND HAVE FUN?

PLAY RUGBY THIS YEAR FOR
MACQUARIE UNIVERSITY RUGBY
FOOTBALL CLUB

Macquarie University Rugby Football Club, the oldest sporting club on campus, prides itself on being a competitive force on the field, whilst maintaining a friendly and social atmosphere to enjoy your rugby.

In 2014 we are asking for expressions of interest in forming a Women's Rugby team to participate in the suburban rugby competition in winter and the domestic 7's competition held throughout the spring and summer months.

If you are interested in joining MURFC we are holding an introduction to rugby training session on **Thursday the 20th of February** at Campbell Field (blue circle on map below), Mac Uni Sports Fields, cnr Culloden and Talavera Rds, Marsfield, **from 7 pm**.



You don't have to be a student to play for Macquarie Rugby club. In fact 50% of the current squad are locally based players or non students.

If you are keen to join Macquarie Rugby in 2014 or interested in more information please contact the club at macquarierugby@gmail.com or visit our website www.macrugby.com.au to register for regular updates.

We are also looking for coaches for the Women's team so if you are interested in a coaching position please contact MURFC via the 'contact us page on our website.



search for Macquarie University Women's Rugby on facebook



follow @MacUniRugbyClub on Twitter

www.macrugby.com.au/womens-rugby-murfc-2014